

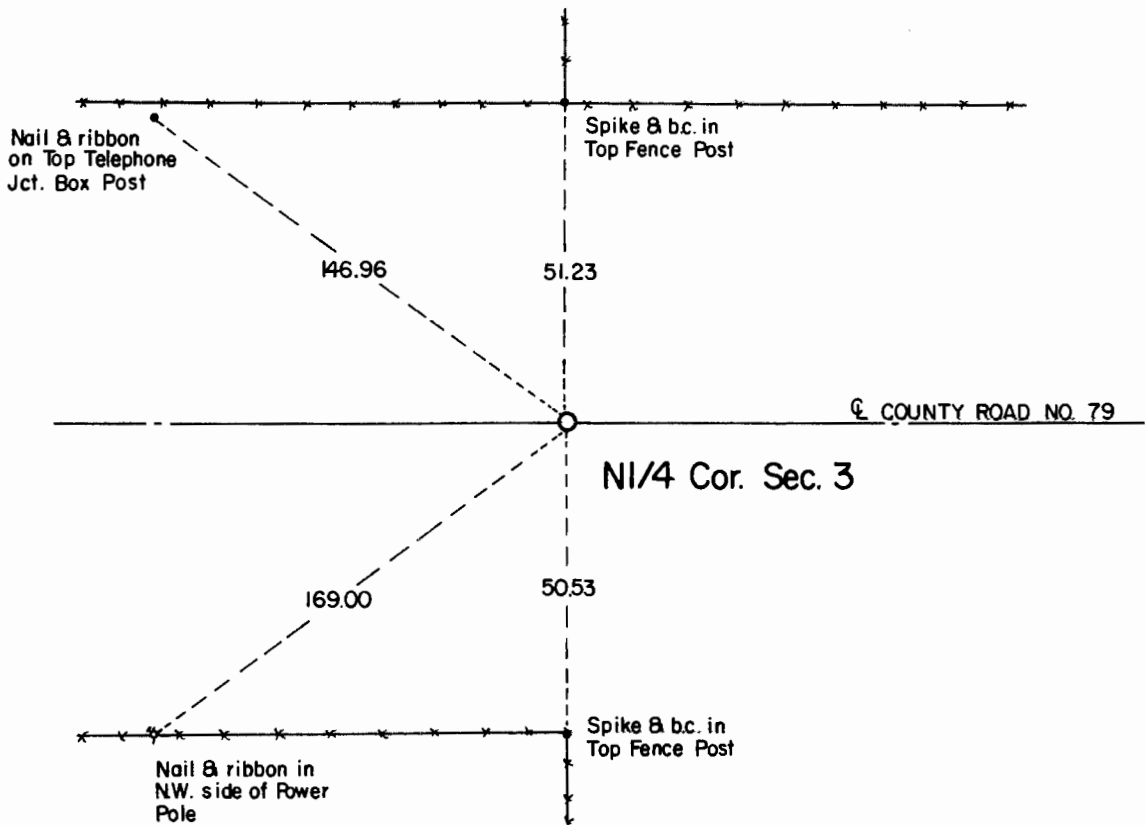
# CERTIFICATE OF LOCATION OF GOVERNMENT CORNER

**North Quarter** Corner of Section **3** , Township **107** , Range **41** 5th P.M.  
STATE OF MINNESOTA, County of Murray.

**Statement:** Aug. 22, 1989 - Found a Capped Iron Monument placed by Gary Martin L.S. above a 9 inch x 12 inch x 18 inch stone. Lowered the monument and placed a Minnesota Department of Transportation Cast Iron Monument.



SKETCH OF REFERENCE TIES



Statement of evidence relative to this corner location is on the back of page.

I hereby certify that this document and the data contained herein was prepared by me or under my direct supervision and that I am a duly Registered Land Surveyor under the laws of the State of Minnesota.

Duane A. Bonnema      Nov 4, 1989  
Duane A. Bonnema      Date

Minnesota Registration No. 14895

OFFICE OF THE COUNTY RECORDER  
COUNTY OF MURRAY

NOV 15 1989

I hereby certify that this document was filed in the County Recorder's office at \_\_\_ M. on the \_\_\_ day of \_\_\_\_\_ A.D., 19\_\_

County Recorder James H. Johnson

By \_\_\_\_\_, Deputy  
DOCUMENT NO. \_\_\_\_\_

North Quarter Cor. Sec. 3 T107N-R41W

Statement:

July 1861

*Original Government Land Office Surveyor J. W. Myers records in his field notes, "drove charred stake, made mound of earth and sod with trench pits as per instructions."*

July 24, 1987

*The Murray County Highway Engineer's Records show that they found a Martin LS pin 3" below the gravel surface. They also note witness ties to the Corner.*

Aug. 22, 1989

*Duane A. Bonnema, L.S. Reg. No. 14895, found a 3/4 in. iron pipe with a plastic cap placed by Gary Martin, LS 12967, at the road surface. Dug below the iron pipe and found a field stone 9 in. x 12 in. x 18 in. at a depth of 3.5 ft. below the road surface. Natural ground was found at a depth of 2.5 ft. below the road surface. The witness ties recorded by the County of July 24, 1987 were checked. A Minnesota Department of Transportation Cast Iron Monument was placed near the road surface above the stone.*